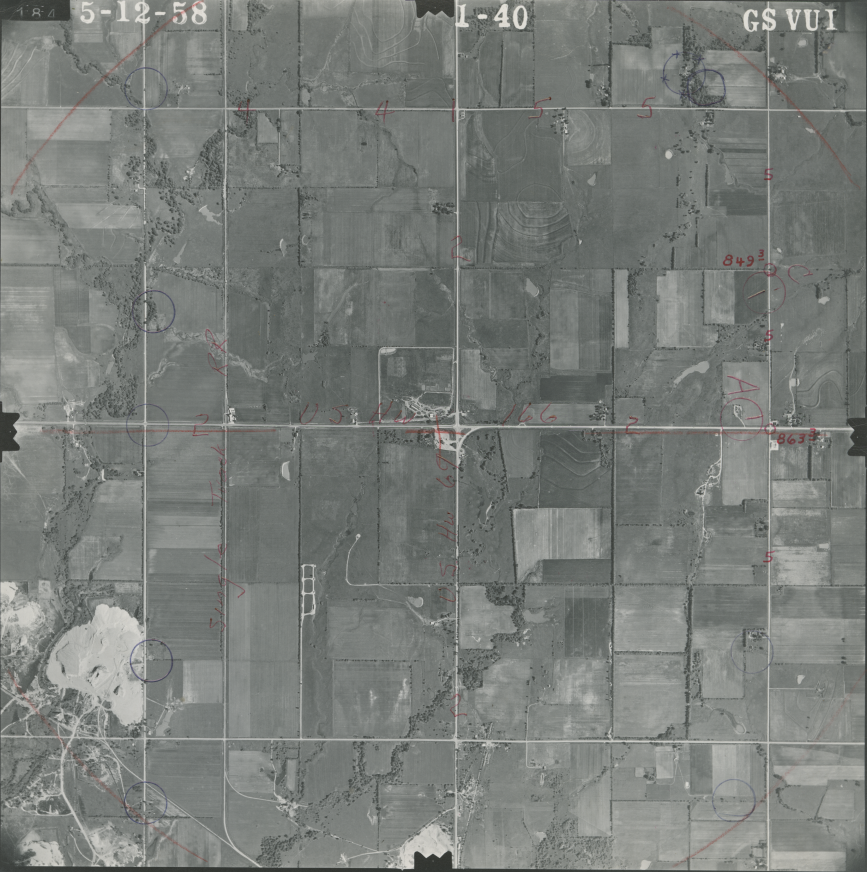


5-12-58

I-40

GS VUI



3.5 mi. I. of town

115

166

849

863

A

4

4

5

5

5

5

5

2

2

(Red circle)

(Red circle)

(Red circle)

(Red circle)

(Red circle)

(Red circle)

(Red circle)

(Red circle)

(Red circle)

(Red circle)

115 mi. S. of I-40