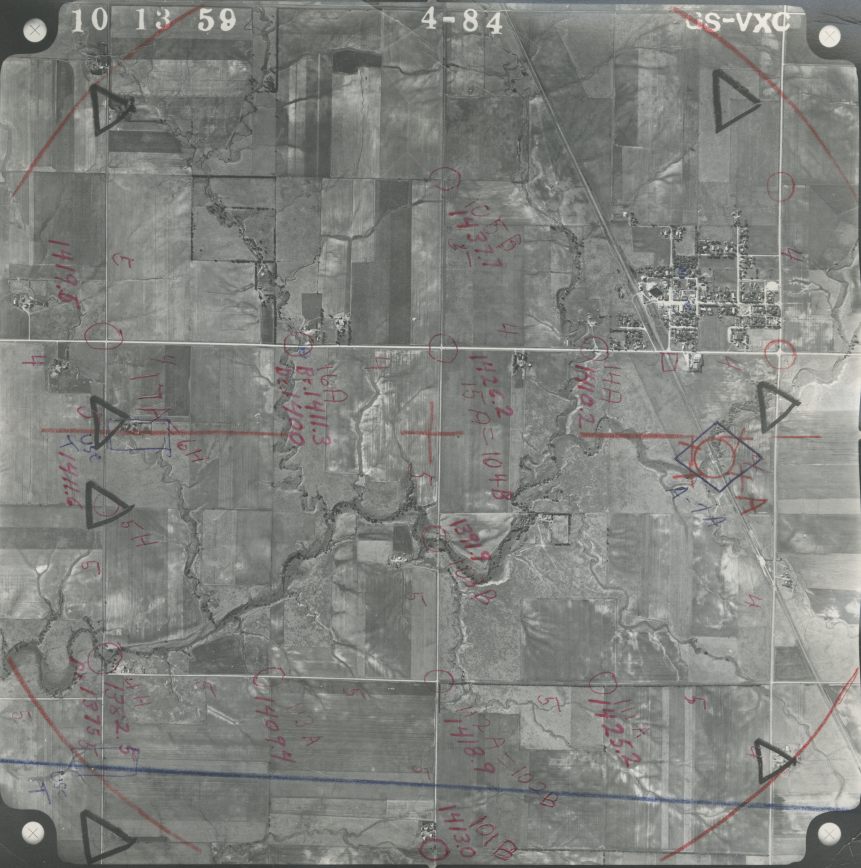


10 13 59

4-84

CS-VXC



1419.8

1437.1
1437.3

1411.3
1411.0

1426.2 = 104B
1415.9

1414
1412.2

1414
1414

1411.4

1429.2
1429.8

1409.4

1418.6
1418.9

1425.9

1422.5
1421.5

1410.1
1410.1B

4

4

4

4

4

4

5

5

4

5

5

5

5

5

5

5

5

5

5

